

## INSTALLATION INSTRUCTIONS

DESCRIPTION: License Bracket Kit  
PART NUMBER: BAT-F16E0-V0  
MODEL: 2021+ MT-07



### ⚠ WARNING

Please read and understand these instructions completely before installation to avoid possible injury, or damage to the accessory or vehicle.

### WARRANTY INFORMATION:

In the United States, see your Yamaha dealer for a copy of the Yamaha Genuine Parts and Accessories Limited Warranty.

### NOTICE:

Installation of this kit requires a torque wrench and should be performed by an authorized Yamaha dealer or a qualified mechanic.

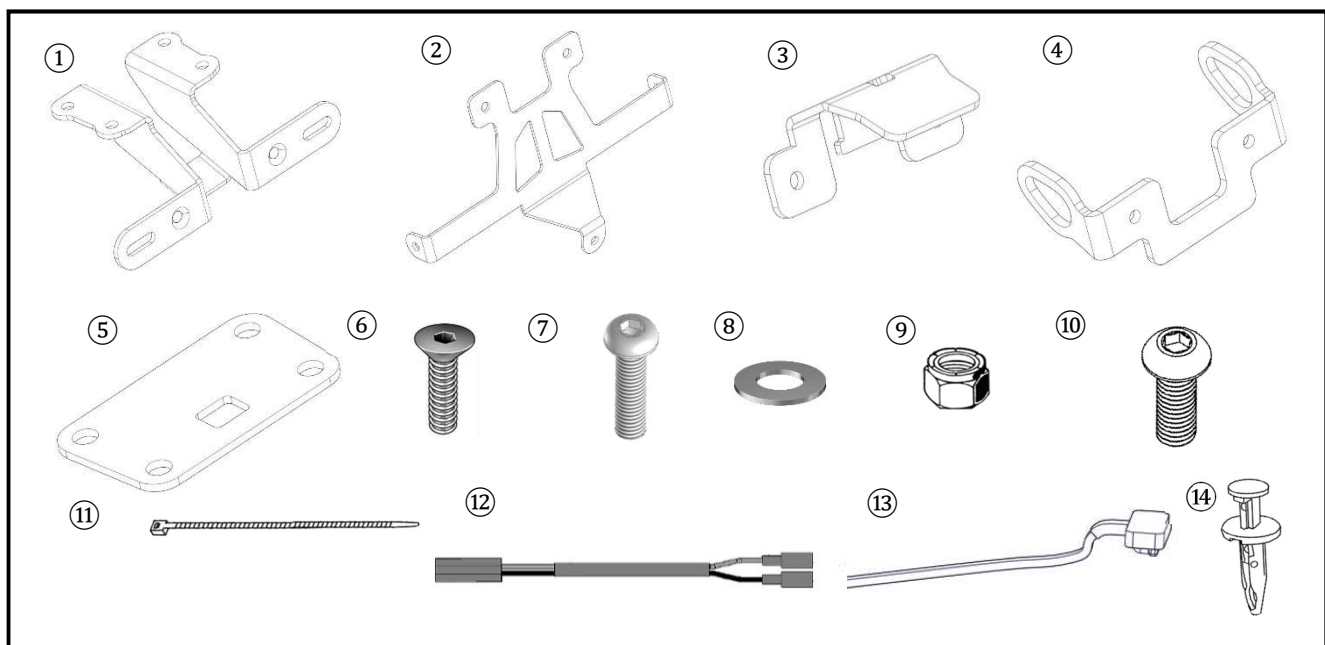
### DEALER OR INSTALLER:

These instructions contain important information for future reference and *must* be given to the customer.

### PARTS LIST:

No.	Part Number	Description	Qty
--	<b>BAT-F16E0-V0</b>	License Bracket Kit	--
①	*	Main Bracket	1
②	*	Reflector Holder	1
③	*	LED Mount	1
④	*	Turn Signal Mount	1
⑤	*	Mud Guard	1
⑥	*	M6x1.0x25 Flat Head Screw	2
⑦	*	M6x1.0x20 Button Head Screw	4
⑧	*	M6 Flat Washer	8
⑨	*	M6 Nylon Locking Nut	4
⑩	*	M6x1.0x16 Button Head Screw	2
⑪	*	Cable Tie	3
⑫	B7N-H2309-V0	Wire Harness	1
⑬	B6N-H4560-V0	License Light Assy.	1
⑭	90269-07007	Rivet	2

\* Part supplied with kit only and not available separately.

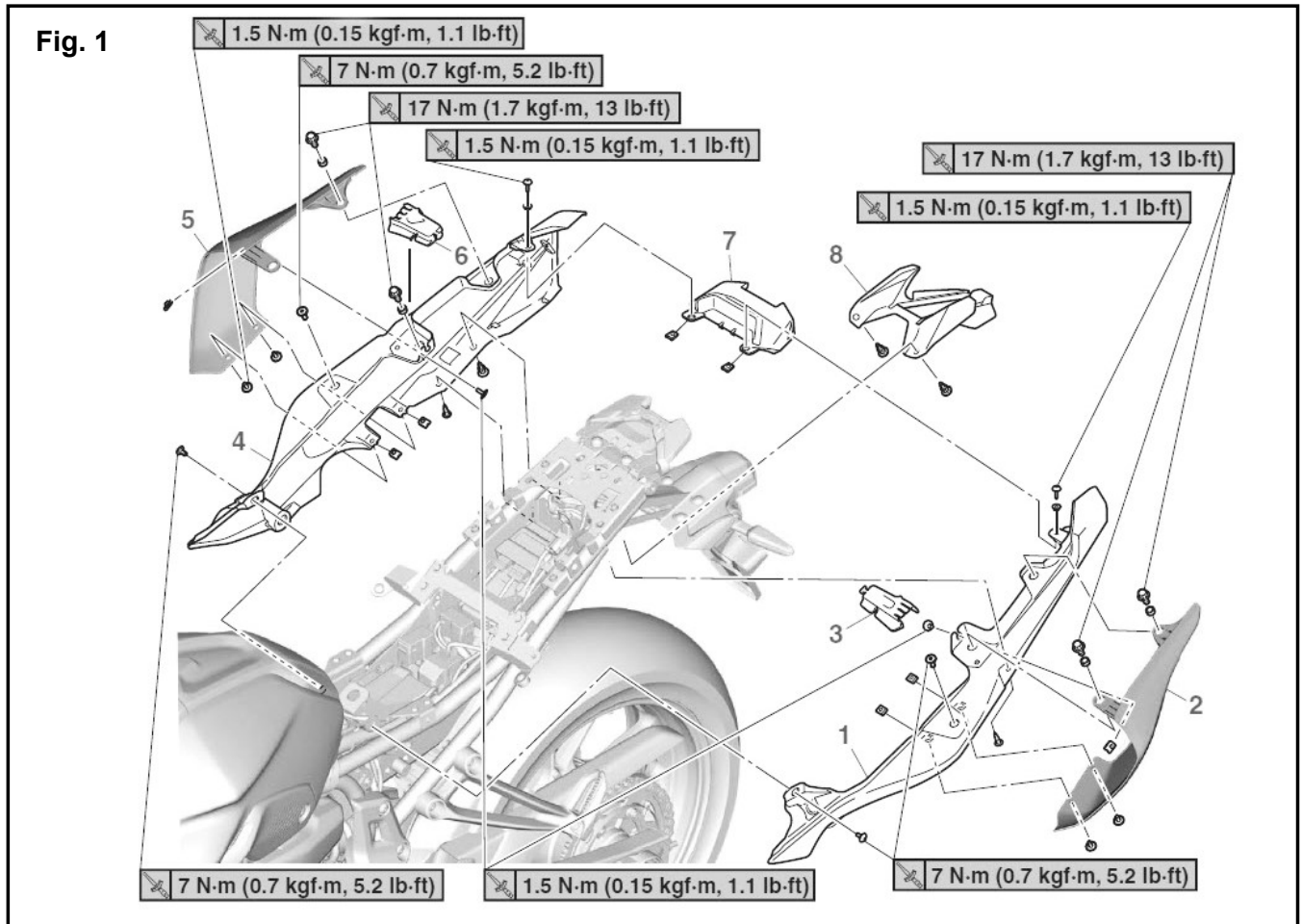


## PREPARATION:

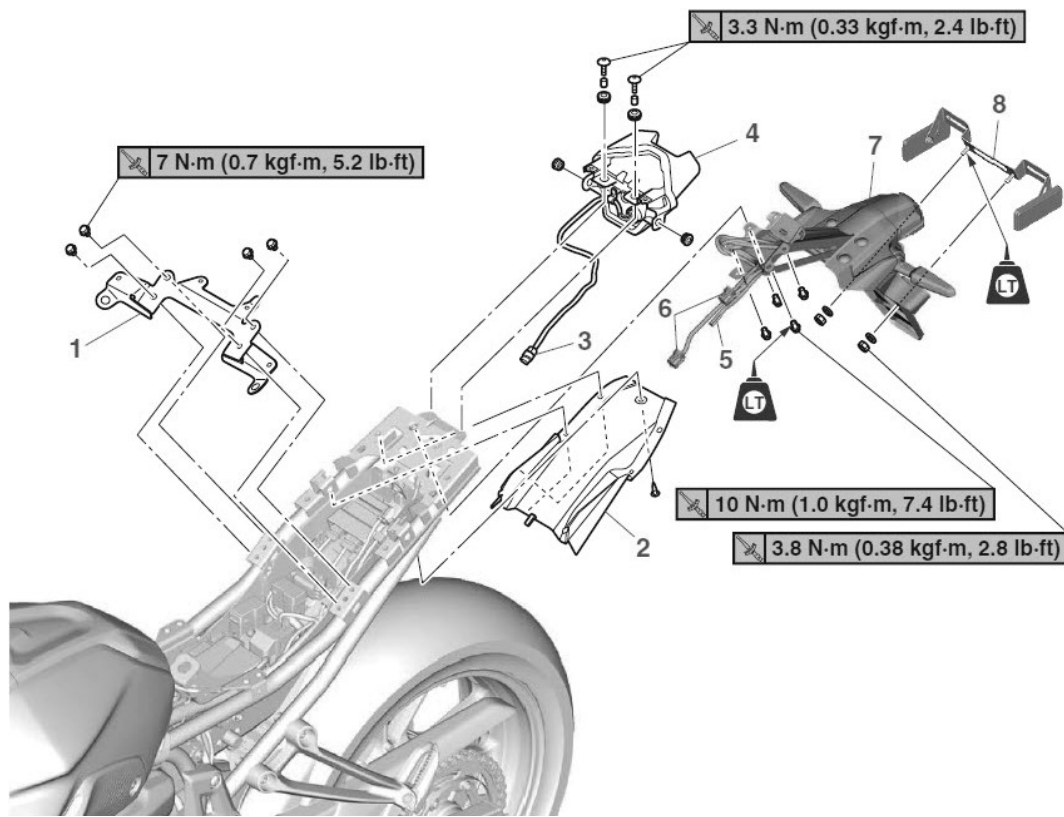
- Place the motorcycle on a secure and level surface.
- Clean the mounting surfaces before beginning installation.

## INSTALLATION:

1. Refer to the Owner's Manual for procedures on removing the rider and passenger seat. Retain all hardware for reuse.
2. Remove the left and right side covers. Retain all hardware for reinstallation. Refer to the MT-07 Service Manual images for hardware placement and torque specifications. (Fig. 1 and 2)

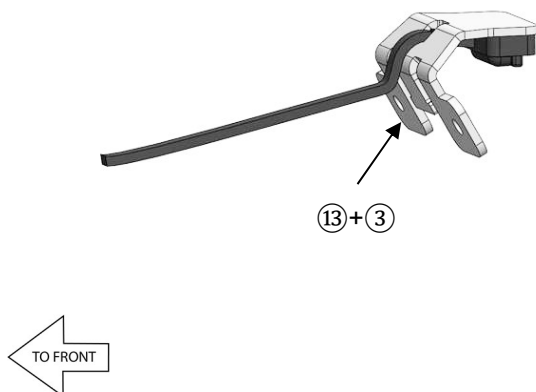


**Fig. 2**

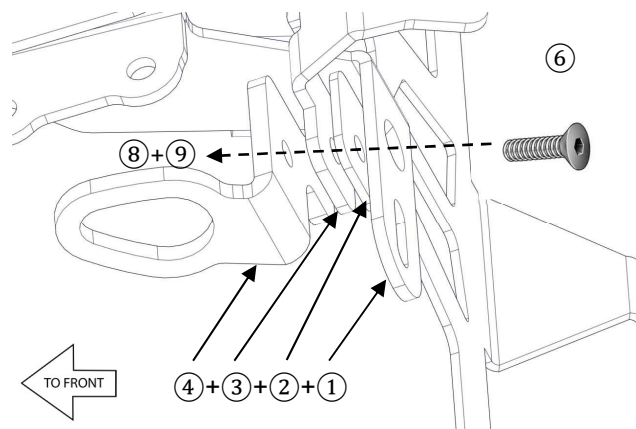


3. In the upper tail section, disconnect the license plate light connector and rear turn signal electrical connections. (Fig. 2)
4. Remove the stock bolts and rivets from under the tail section that attaches the mudguard assembly to the tail section. (Fig. 2)
5. Remove and retain the stock reflectors, turn signals, and stock wire protector from the mudguard assembly.
6. Insert the (13) License Light Assembly wire through the access hole in the (3) LED Mount Bracket. Peel the adhesive backing from the (13) License Light Assembly and place it on the (3) LED Mount Bracket. (Fig. 3)
7. Assemble the tag eliminator by inserting the (6) M6x1.0x25 Flat Head Screws into the holes on the (1) Main Bracket. (Fig. 4)
8. Place the (2) Reflector Holder, (3) LED Mount and then (4) Turn Signal Mount on top of the (6) M6x1.0x25 Flat Head Screws. (Fig. 4)
9. Place one (8) M6 Flat Washer on the (6) M6x1.0x25 Flat Head Screws. Then thread on two (9) M6 Nylon Locking Nuts. Torque to 7Nm (0.7 m-kg or 5.1 ft-lb). (Fig. 4)

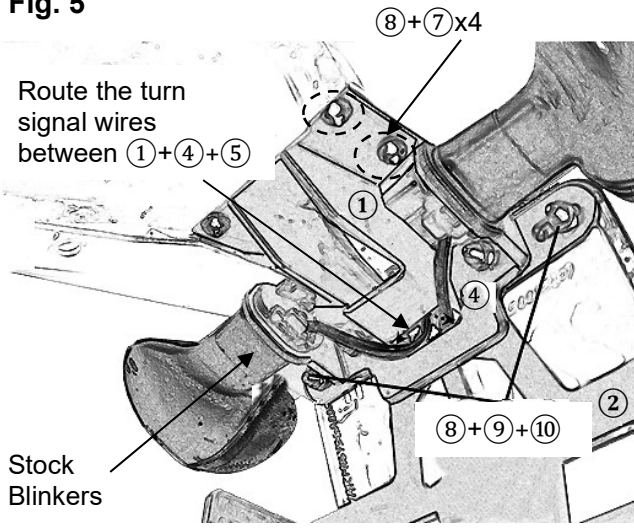
**Fig. 3**



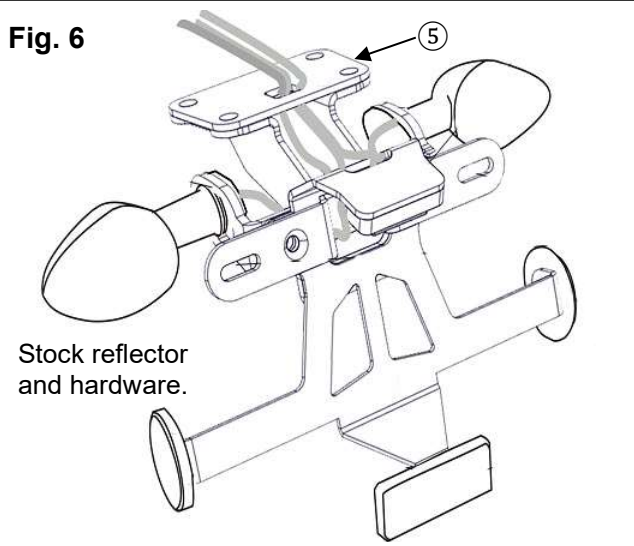
**Fig. 4**



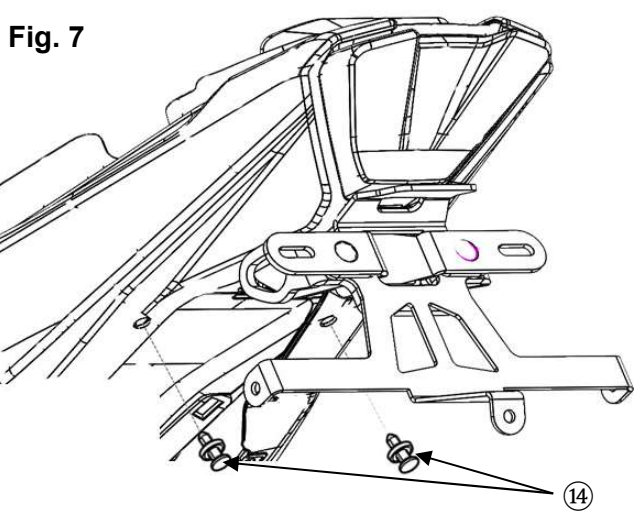
**Fig. 5**



**Fig. 6**



**Fig. 7**



10. Install the stock blinkers and insert the (13) License Light Assembly wire and the stock blinker wires through the (5) Mud Guard. (Fig. 5 and 6)
11. Align the License Bracket Kit on the underside of the tail section in the stock location. (Fig. 5)
12. Place one (8) M6 Flat Washer on each (7) M6x1.0x20 Button Head Screws and apply a dab of blue thread locker.
13. Thread the (7) M6x1.0x20 Button Head Screws through the License Bracket Kit and (5) Mud Guard and into the tail section. (Fig. 5)
14. Torque to 10Nm (1.0 m-kg or 7.4 ft-lb)
15. Connect the blinker wires into the stock wire harness.
16. Connect the (12) Wire Harness into the (13) License Light Assembly and connect it into the stock wire harness and use the (11) Cable Ties to secure the wires in the tail section.
17. Install the stock reflectors on the (2) Reflector Holder with the stock hardware. (Fig. 6)
18. Reinstall the stock body panels and torque the hardware to the stock specification. Replace the removed rivets with the (14) Rivets from the kit. (Fig. 7)
19. Attach the license plate to the tag eliminator with two (10) M6x1.0x16 Button Head Screws and the remaining (8) M6 Flat Washers and (9) M6 Nylon Locking Nuts.

**MAINTENANCE:**

Periodically, check torque on all hardware. If loose hardware is found, re-torque to specification.

**CARE AND CLEANING:**

Clean painted metal parts with a clean soft cloth and mild soap and water solution. Rinse and dry.

**CUSTOMER SERVICE:**

For further information see your Yamaha dealer.

**ESTIMATED TIME TO INSTALL: 1.0 HRS.**